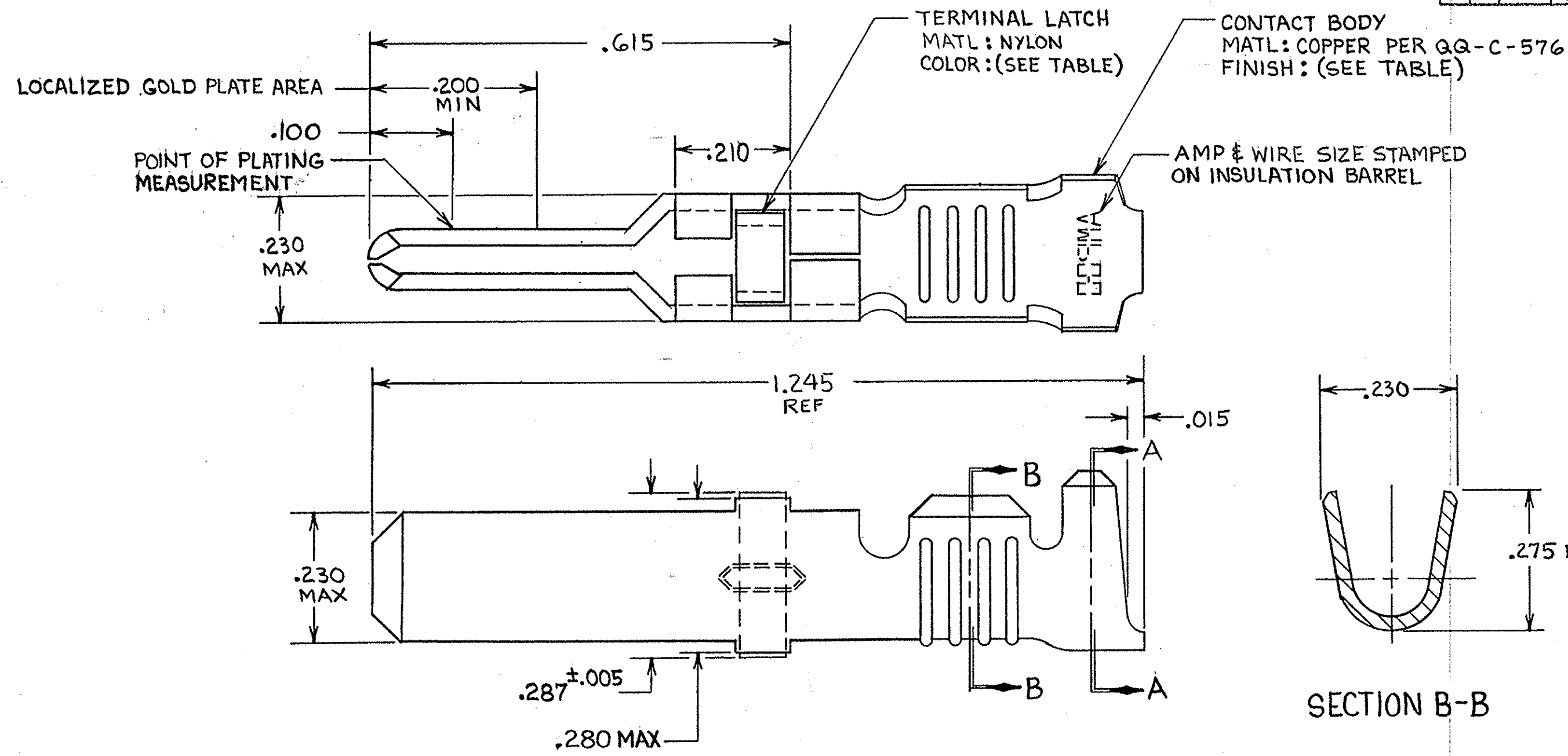


THIS DRAWING IS UNPUBLISHED. RELEASED FOR PUBLICATION, 19
 © COPYRIGHT 19 BY AMP INCORPORATED, HARRISBURG, PA. ALL INTERNATIONAL RIGHTS RESERVED. AMP PRODUCTS MAY BE COVERED BY U.S. AND FOREIGN PATENTS AND/OR PATENTS PENDING.

| REVISIONS | | | | | | |
|-----------|---|------|-----|----------------------------------|-------------|----------|
| P | F | ZONE | LTR | DESCRIPTION | DATE | APPROVED |
| ✓ | ✓ | | V | REDRAWN & REVISED PER ECN R-1451 | 9-30-85 | RBR JLB |
| ✓ | ✓ | | W | OBSOLETE -3 PER R-2760 | 3-4-87 | SDG SLB |
| ✓ | ✓ | | Y | REV PER ECN DF-5920 | JL 11-25-92 | NOV |
| | | | Z | REV PER 0630-269-03 | CS 5-03 | JYE |



- 1. REELED FOR USE WITH STANDARD APPLICATORS.
- 2. REELED FOR USE WITH HEAVY DUTY MINI-APPLICATORS.
- 3. PLATED WITH .000100 MIN SILVER PER QQ-S-365.
- 4. PLATED WITH .000015 MIN GOLD PER MIL-G-45204 IN THE LOCALIZED GOLD PLATE AREA, GOLD FLASH ON THE REMAINDER, OVER .000030 MIN NICKEL PER QQ-N-290.
- 5. PLATED WITH .000030 MIN GOLD PER MIL-G-45204 IN THE LOCALIZED GOLD PLATE AREA, GOLD FLASH ON THE REMAINDER, OVER .000030 MIN NICKEL PER QQ-N-290.
- 6. PLATED WITH .000050 MIN 93-7% TIN-LEAD ALLOY OVER .000030 MIN NICKEL PER QQ-N-290.
- 7. WIRE RANGE = 10 AWG.
- 8. INSULATION RANGE = .190 - .220 DIA.
- 9. PLATED TIN (NO LEAD), .000050 MIN THK PER ASTM-B-545 OVER NICKEL .000030 MIN THK PER QQ-N-290.

| TERMINAL LATCH COLOR | FINISH | STRIP ASS'Y P/N REF | STRIP ASS'Y P/N REF | LOOSE PIECE P/N ASS'Y |
|----------------------|--------|---------------------|---------------------|-----------------------|
| BLACK | 4 | 1-66253-0 | 66253-9 | 66259-5 |
| NATURAL | 3 | 66253-8 | 66253-4 | 66259-4 |
| BLACK | 4 | 66253-7 | 66253-3 | 66259-3 |
| BLACK | 5 | 66253-6 | 66253-2 | 66259-2 |
| BLACK | 6 | 66253-5 | 66253-1 | 66259-1 |

| | | | | | |
|--|-------------|---------|--|---------|------------|
| UNLESS OTHERWISE SPECIFIED DIMENSIONS ARE IN INCHES. TOLERANCES ON: DECIMALS ± .010 ANGLES ± .010 | CONTRACT NO | | AMP AMP INCORPORATED Harrisburg, Pa. 17105 | | |
| | DR | 9-27-85 | | | |
| | CHK | 10-1-85 | NAME MALE TYPE XII CONTACT LOOSE PIECE ASS'Y | | |
| | APPD | 10-1-85 | | | |
| MATERIAL SEE CALLOUT | APPD | 10-3-85 | SIZE | FSCM NO | DRAWING NO |
| FINISH SEE DASH NO | DSGN APPD | | C | 00779 | 66259 |
| | OTHER APPD | | SCALE | NTS | SHEET |